



PORTABLE CHARGER

Goblin EV PORTABLE CHARGER WS020, built on the CE standard, combines practical performance, stylish design and reliable technologies.

Equipped with vehicular communication and safety protection, the portable charger, which comes with an industrial plug at one end and a CE standard TYPE 1/2 charging plug at the other, makes safer home charging available.

A unique charging display allows users to know the various stages of charging through Power Light, Plug-in Light, Charging Light and Current Gear Light, making users more reassured. We are committed to Bauhaus style and dedicated to designing simple, practical and suitable products. The world needs to be transformed and Goblin EV enables your green journey to be safer, more convenient and more typical.

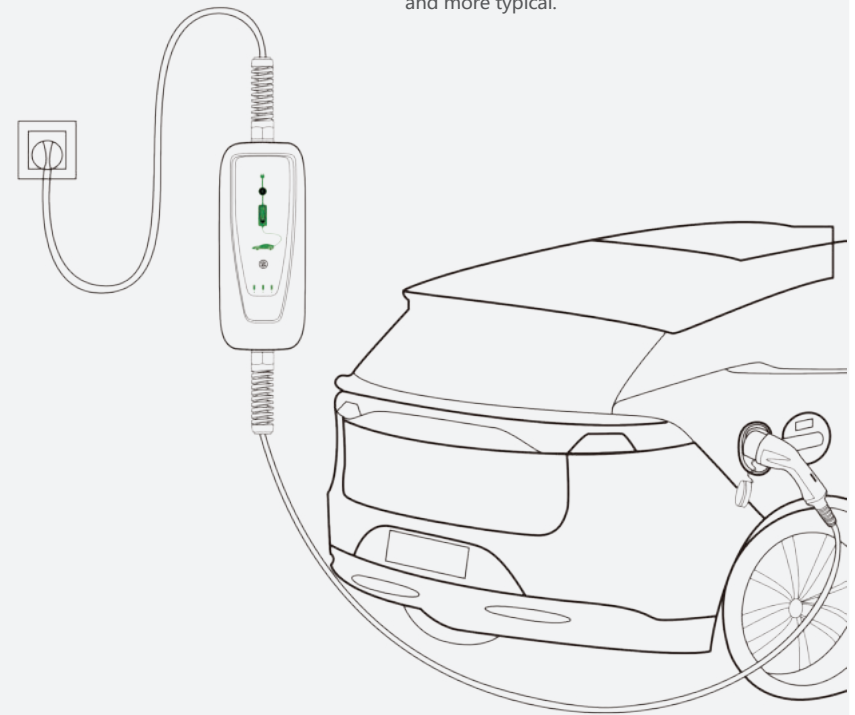


Table of contents

- 1. Goblin EV Portable Charger WS020 01
- 2. Technical Specifications 02
- 3. Charging Status Indicator 04
- 4. How to Start Charging 05
- 5. Safety Instructions 07
- 6. Storage and Maintenance 09
- 7. Warranty 10

EN

PORTABLE CHARGER WS020



EN



Technical Parameters

General

Voltage Rating : 230V AC
Maximum Power : 3.6kw
Wall Side Plug : SCHUKO/CEE/UK/NEMA/NZ
Certificate : CE, FCC, RoHS, IK10

Specifications

Shell Material	Shell Material	ABS+PC Plastic Shell
Electrical Indicators	Overall Dimensions	248*104*49mm
	Weight	2.8kg
	Input Voltage	230V AC
	Input Current	16A (MAX)
	Frequency	50Hz/60Hz
	Maximum Power	3.6KW
	Output Voltage	230V AC
	Stand by Power	≤3W
	Standard	EN 62752
	MTBF	100,000 hours
Environmental Indicators	Applicable Scene	Outdoor / Indoor
	Operating Temperature	-30°C ~ +50°C
	Operating Humidity	5% ~ 95%
	Altitude	< 2000m
	IP Rating/Code	IP66
	Cooling Mode	Natural cooling

Safety Protection	Over-voltage Protection	YES
	Under-voltage Protection	YES
	Overload Protection	YES
	Short Circuit Protection	YES
	Leakage Protection	YES
	Ground Fault Protection	YES
	Over-temperature Protection	YES
	Lightning Protection	YES
Human-computer Interaction	Status Light	YES
	Switch Button	YES
	Switch Light	YES

EN

EN

Charging Status Indicator



Mode	Power Light	Plug-in Light	Charging Light	Current Gear Light
Stand By	On	Off	Off	Selected Current Light On
Plug-in /full Charged	On	On	Off	Selected Current Light On
Charging	Flowing	Flowing	Flowing	Selected Current Light On
Fault	On	Off	Off	All The Lights Flashing

LED Display Status

Fault Code	Possible Cause	Display Mode
1	CP Fault	Fault Code 1
2	Under-voltage Protection	Fault Code 2
3	Over-voltage Protection	Fault Code 3
4	Ungrounded Protection	Fault Code 4
5	Over-current Protection	Fault Code 5
6	Short Circuit Protection	Fault Code 6
7	Leakage Protection	Fault Code 7
8	Over-Temperature Protection	Fault Code 8

★ Introduction to Fault Code:

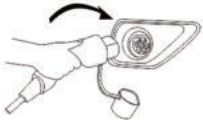
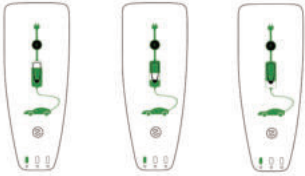

- The green light will flash as many times as the fault code is and it will be off for the remaining seconds.
- For example, when the fault code is 5: the green light flashes 5 times and is off for 3 seconds, and then flashes 5 times and off for 3 seconds, etc.
- When there are multiple faults, only one fault code displays.
- The charging will not continue when short circuit protection fault and leakage protection fault occur, and can be recovered only after the charging plug is unplugged and plugged in again; other faults do not need to plug in and unplug the charging plug, and the charging will resume automatically after the fault is recovered.

How To Start Charging

Quick Tutorial on Use of Switching Charging Box

Caution: In order to switch the charging current, please make sure the power plug is firmly inserted into the socket and the plug for the EV vehicle is disconnected.

Step	Illustration	Operation
1.		Insert the plug into the Power switch, and the Power Light is steady green if the charging box is started.
2.		When the switching button is switched to a high current, the corresponding current gear light will be on after finishing gear switching.
3.		Pay attention to checking the charging current under the charging box and adjust the current as you want.

4.		<p>Plug in the charging gun head and the green (charge) indicator light will be on.</p>
5.		<p>It will enter into charging status automatically, and the Charging Light will display flowing green light.</p>
6.		<p>When you need to finish charging, just pull out the charging gun directly.</p>

Safety Instructions

DANGER!

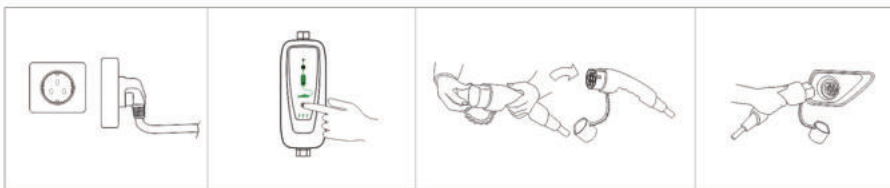
Before operating or performing maintenance of this product, please read the safety instructions below. Failure to adhere to and implement all prescribed instructions and procedures will void all warranties and absolve Goblin EV Charger from all claims of liability.

Failure to follow instructions may result in danger!

- Please use the charging stand only when the technology operates in a normal and secure way;
- Keep children and pets away from the charging box;
- Install a charging box away from pyrotechnics, dust and corrosive occasions;
- The output of the charging box has a high voltage, so you must pay attention to personal safety when using it;
- If the charging box fails, there is a danger of electric shock and even death. Under emergencies, you must cut off the power supply.
- Do not disassemble the charging box during the use.

EN

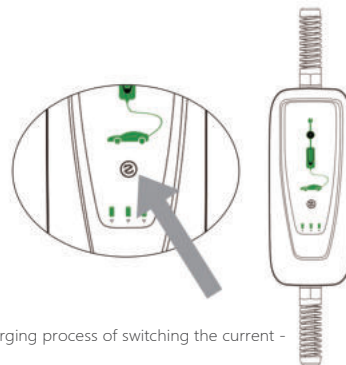
EN



- connect electric vehicle and start the charging -



Note: 10A charging socket can be used for portable charger below 10A, and 16A charging socket must be used for portable charger above 10A.



- Charging process of switching the current -



WARNING !

Failure to follow instructions may result in danger!

- Regularly check whether the charging box has visible damage, and there may be an electric shock hazard when operating the damaged charging box.
- Make sure that all safety facilities are available at all times and test regularly to ensure proper operation;
- If a ground fault occurs, inspect the charging box only after confirming that there is no high-voltage power in the system. All these operations are based on the assumption that the base's cable carries voltage.
- The users of the charging box must observe the principles and regulations to ensure personal safety and equipment safety.
- Before powering on the device, please make sure that the device is properly grounded to avoid unnecessary accidents.
- All tools that do not need to expose the metal parts should be insulated to avoid a short circuit by preventing the exposed metal parts from touching the metal frame.
- Do not modify, retrofit, or change any part by yourself under any circumstances.
- To make sure service life and stable operation, the environment for using the equipment should be kept as clean, with constant temperature and humidity as possible. The charging box must not be used in the presence of volatile gas or flammable atmosphere.
- Be sure to confirm that the input voltage, frequency, circuit breakers and other conditions of the device have already met the specifications before the device is powered on.
- Need to check if it meets local regulatory requirements before use.
- The height requirement for hanging a plug is 0.4-1.5m above ground level.

Storage and Maintenance

The product is already packed in the factory, and during transportation, strong impacts and bumps should be avoided to protect the outer packaging of the product from damage. The product should be placed at an ambient temperature of $-30^{\circ}\text{C} \sim + 50^{\circ}\text{C}$ and relative humidity of no more than 95%. The ambient air should not contain acids, alkalis or other corrosive gases and explosive gases, and it should be protected from rain, snow, wind and sand.

Warranty

Warranty Conditions

When the product leaves the factory, the user completely abides by the storage, installation and use rules specified in this instruction.

After the product leaves the factory, due to transportation reasons, the user finds that the product or supporting parts were damaged during the unpacking inspection.

Warranty Period

2 years.

Warranty Method

During the warranty period, the manufacturer is responsible for free replacement or repairment.

Beyond the warranty period, the user shall negotiate with the manufacturer to replace or repair in a paid way.

This manual is subject to change without prior notice.

If the contents of this manual do not conform to the real object, please refer to the real object.

EN

GOBLIN EV - CONTACT US

GOBLIN EV-UK

3B Arun Buildings
Arundel Road
Uxbridge
UB8 2RP
Phone: +44 1895 730021
sales@goblinev.com
www.goblinev.com

GOBLIN EV- UAE

P O Box: 127916
S15, W02, Russia Cluster
International City, Dubai
United Arab Emirates
Mob: +971 527211190
sales@goblinev.com
www.goblinev.com

GOBLIN EV-SAUDI ARABIA

2nd Floor, Al-Baseel Tower, Olaya feras ibn alnader st,
Al Khobar
Phone: +44 1895 730021
sales@goblinev.com
www.goblinev.com

GOBLIN EV- KUWAIT

Office#433, Floor-4, Souk Al Wataniya Complex
Kuwait City, Kuwait
Mob: +965 667 92923
sales@goblinev.com
www.goblinev.com

GOBLIN EV- INDIA

TC 42/4050/1, Poojappura, Trivandrum
Kerala - 695012, India
Mob: +91 85939 33300 / +91 99460 16581
sales@goblinev.com
byju@goblinev.com
www.goblinev.com